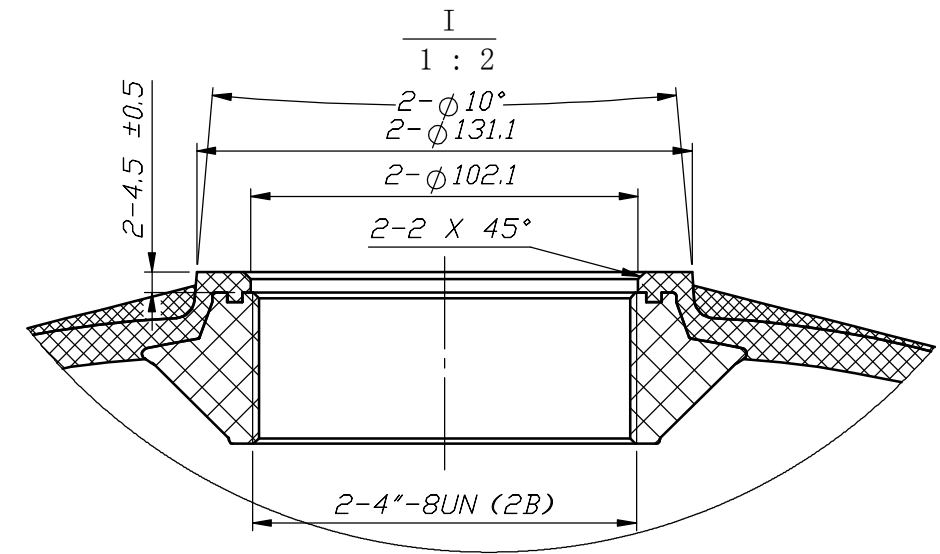


MODEL	Length			VOLUME		WEIGHT	
	mm	inch	+/- (mm)	Liters	CU.Ft	Kg	LBS
24x72D	2168	85.35	15	494	17.5	50	110.23

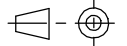


NOTES:

- TANK MUST MEET ALL APPLICABLE SPECIFICATIONS OF NSF/ANSI 044 STANDARD, LATEST REVISION.
- OPERATING SPECIFICATIONS:
  - A. MAXIMUM WORKING PRESSURE - 150PSI (10.5BAR);
  - B. TEMPERATURE RANGE - 34-122 °F (1-50°C);
  - C. MAXIMUM VACUUM - 5.5"Hg (140mm Hg);
  - D. MEDIA - WATER
- TEST REQUIRMENT
  - A. BURST PRESSURE TEST: 4.2MPa;
  - B. CYCLIC PRESSURE TEST: 1.05MPa / 100,000 CYCLES ;
  - C. HYDROSTATIC PRESSURE TEST: 2.52MPa / KEEP 15MINS ;
- VISUAL LINER INSPECTION
  - A. NO MORE THAN 10 INTERNAL OR EXTERNAL BLEMISHES OR BURNT DEBRIS;
  - B. NO INTERNAL OR EXTERNAL BLEMISHES OR BURNT DEBRIS LARGER THAN 3 x 3mm;
  - C. NO INTERNAL BLEMISHES OR BURNT DEBRIS ALLOWED;
- ALL GLASS STRANDS FROM FIBERGLASS LINER TO BE BONDED AND COVERED;
- THE PERPENDICULARITY TOLERANCE OF THE AXIS OF THREADED INSERTS AND THE HORIZONTAL PLANE OF THE TANK IS <math>< 0.2\text{mm}</math>;
- THE PERPENDICULARITY TOLERANCE OF THE TANK BOBY AFTER BEING INSTALLED WITH BASE AND THE GROUND LEVEL IS <math>< 5\text{mm}</math>;
- LABEL'S POSITION CAN BE CHANGED WITH THE CUSTOMER'S REQUIREMENT.

No.	Part No.	Product Name	Material	Quantity	Remarks
5	07040031B	The base (triangle) of the 24" tank		1	
4	07032162	PE inner pot of 24x72 tank, 4"-4" ( $\phi 607 \times 1870$ )	HDPE	1	
3		Composite material winding layer		1	
2		Label		1	
1	07080034	UN threaded inserts (big) of 4" tank	PPO	2	

  
 email: info@kontec.ae tel.: +971 04 258 7862  
 www.kontec.ae

VERSION NO.		DESCRIPTION OF CHANGES:		SIGNATURE	DATE	2472 frp tank 4"-4"	
DESIGNER	STANDARD	STAGE REMARK	NUMBER /SET	SCALE	07542472E		
			1	1:10	MATERIAL:	----	
INSPECTION	AUTHORIZATION	PROJECTION			SOURCING FROM:	ZZ	
TECHNOLOGIST		TOTAL PAGES:			PAGE NO.	2472 frp tank 4"-4"	